



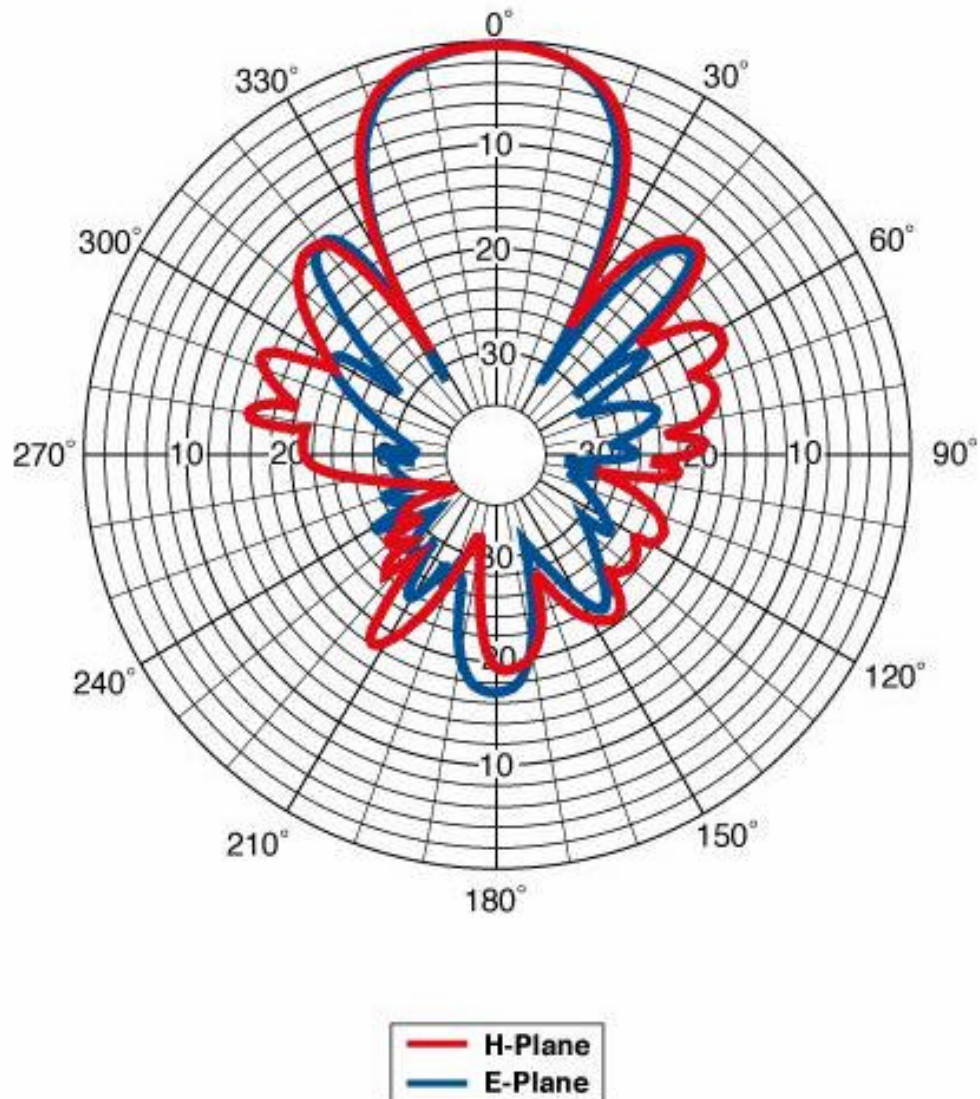
Directional Yagi Antenna - Part Number: YAGI2415 Specifications (Electrical and Mechanical)

<i>SPECIFICATIONS</i>	YAGI2415
Frequency	2.4 – 2.5 GHz
Gain	15 dBi
Bandwidth @ 1.5:1 SWR (-3dB Beamwidth)	30 MHz (E-Plane) 34 MHz (H-Plane)
Nominal Impedance	50 Ohms
Maximum Power	50 Watts
Vertical Beam Width	44 Degrees
Horizontal Beam Width	35 Degrees
Front-To-Back Ratio	18 dB
Wind Surface Area	0.4 ft ² (.04 M ²)
Number of Elements	15
Wind Survival	125 Mph (200 Kph)
Wind Survival (1/2" Ice)	100 Mph (161 Kph)
Material (Radome)	UV Stable Polycarbonate
Material (Radiating Element)	Copper
Material (Boom)	6061 T6 Aluminum
Material (Hardware)	Stainless Steel
Material (Elements – NOT Radiator)	6061 T6 Aluminum Rod
Weight	<1 Lb. (.473 Kg)
Mounting	Pole/Mast & Surface
Interface Connector	“N” Female
Mounting Hardware Kit	Included (U-bolts)
Length	26 In. (66 Cm)
Mounting Dimensions (Max.)	Cylindrical Mast 2 1/8” (5.4 Cm)



*Digital Wireless Corporation ** One Meca Way ** Norcross, Georgia ** USA
Phone: 770.564.5540 ** Fax: 770.564.5541 ** E-mail: mkting@digiwrls.com*

YAGI2415



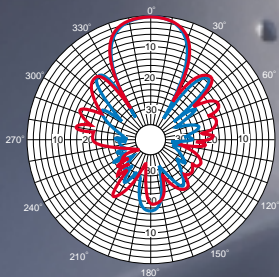
PRODUCT DATA SHEET



2.4 GHz DATA TRANSMISSION YAGI

- UV stable housing
- One piece copper radiating element
- Advanced microwave substrate
- Stainless steel hardware
- UltraLink® Pigtail

■ H-Plane
■ E-Plane



PC2415N

PC2415N



2.4 GHz Yagi

For those long-range directional applications, Cushcraft has designed the PC2415N Yagi. It produces a gain of 13.9 dBd and can be mounted in a number of ways. The model shown utilizes the flat plate design although many others could be used. Cushcraft has the ability to modify this model for OEM applications to fit your needs. The UV-stabilized polycarbonate radome shields the antenna from the sun and all weather conditions.

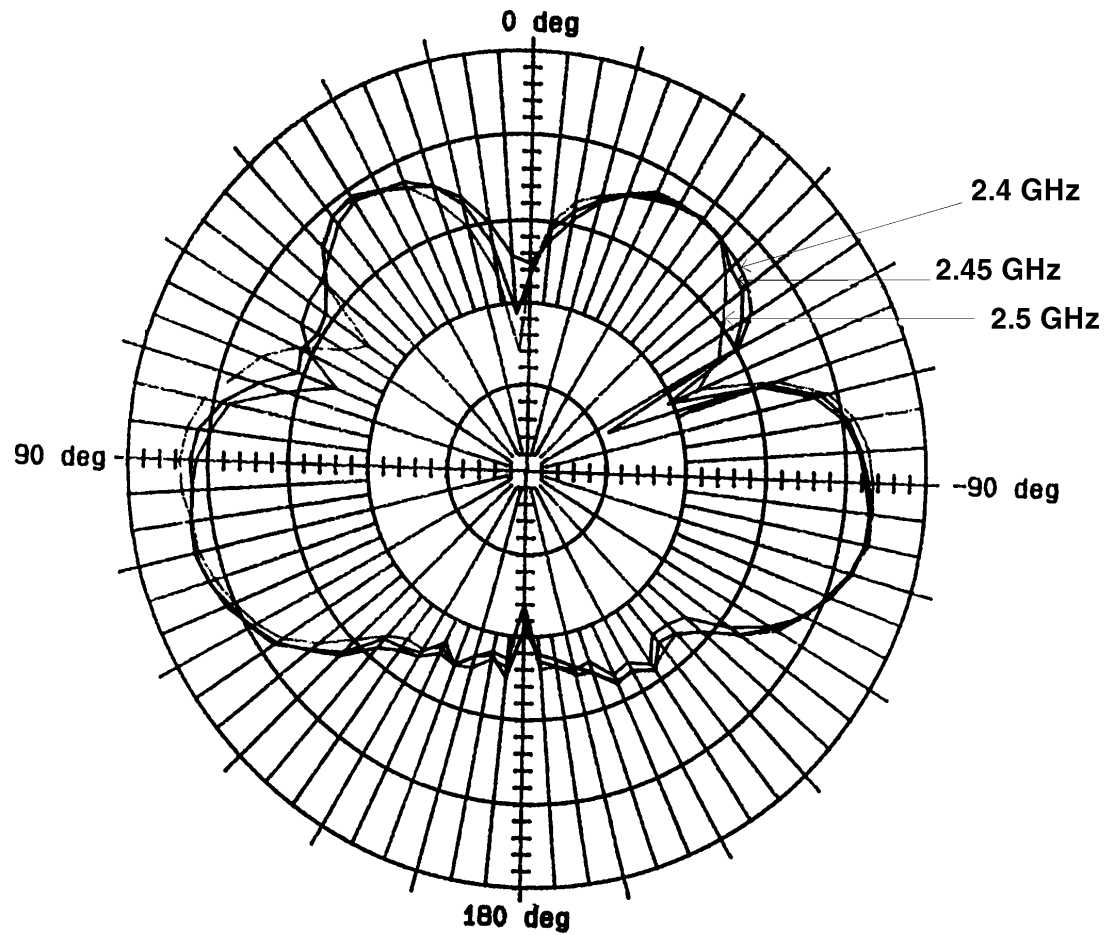
DATA TRANSMISSION YAGI SPECIFICATION CHART

Model:	PC2415N	PC18513N	PC17113N
Frequency: MHz	2400-2500	1850-1990	1710-1880
Gain:	13.9 dBd	13	13
Number Elements:	15	13	12
Front-to-Back Ratio:	18 dB	14	13
E-Plane (3 dB beamwidth):	30°	35°	35°
H-Plane (3 dB beamwidth):	34°	35°	35°
Radiating Element:	Brass	Brass	Brass
Impedance (Ohms):	50	50	50
RF Connector:	Type N female	Type N female	Type N female
Weight:	<1 lbs. (.473)	1.25 (.56)	1.25 (.56)
Mounting:	Mast mounted w/U-Bolts & Brackets		
Enclosure:	UV Stable Polycarbonate		
Mast Diameter Max.:	2-1/8" (5.4cm)	2-1/8" (5.4cm)	2-1/8" (5.4cm)
Ultralink Cable: in (cm)	12" (30.5 cm)	12" (30.5 cm)	12" (30.5 cm)

MAXRAD[®]
STATE OF THE ART ANTENNAS

MAXRAD, Inc.
4350 Chandler Drive
Hanover Park, IL 60103-6763

Orders: (800) 323-9122
Phone: (630) 372-6800
Fax: (630) 372-8077

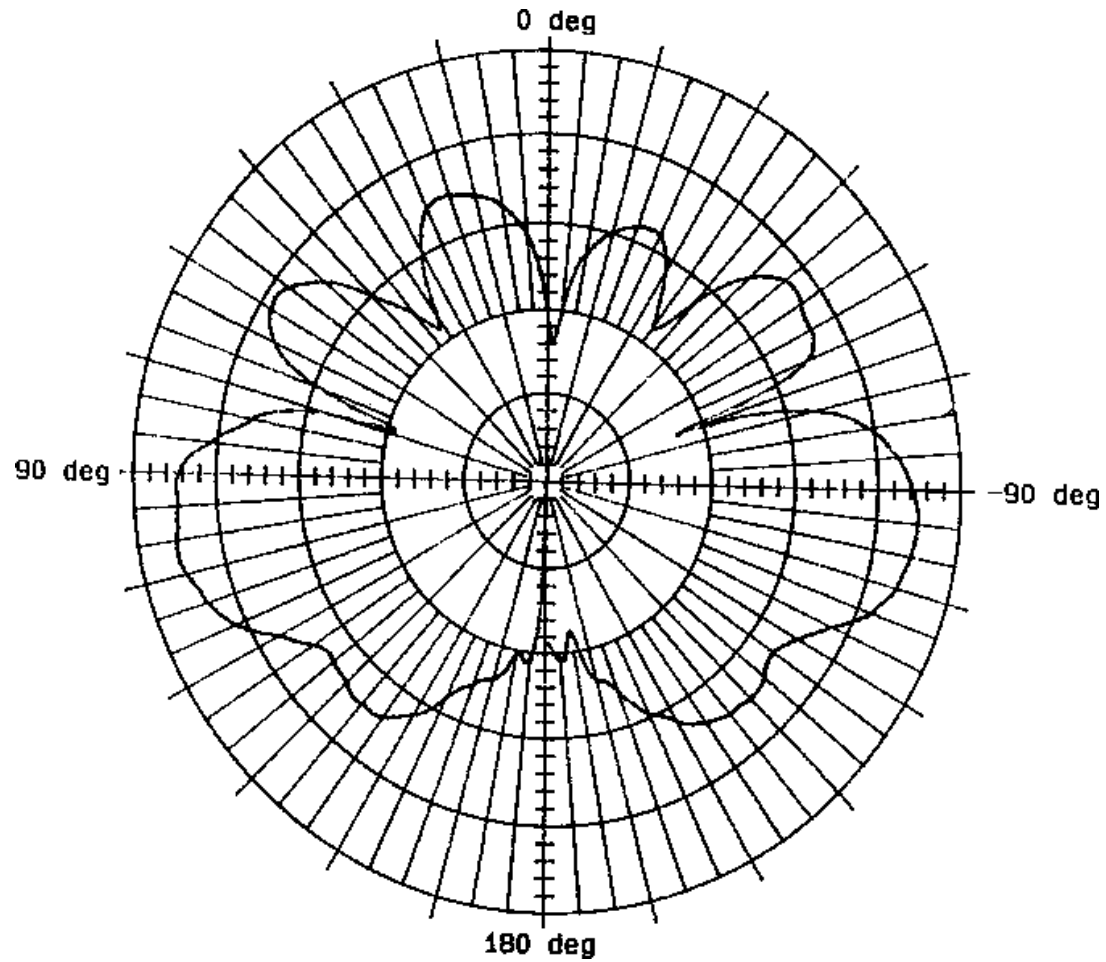


MFB24004 Elevation Cut at 2.4 GHz, 2.45 GHz and 2.5 GHz Frequencies

MAXRAD[®]
STATE OF THE ART ANTENNAS

MAXRAD, Inc.
4350 Chandler Drive
Hanover Park, IL 60103-6763

Orders: (800) 323-9122
Phone: (630) 372-6800
Fax: (630) 372-8077

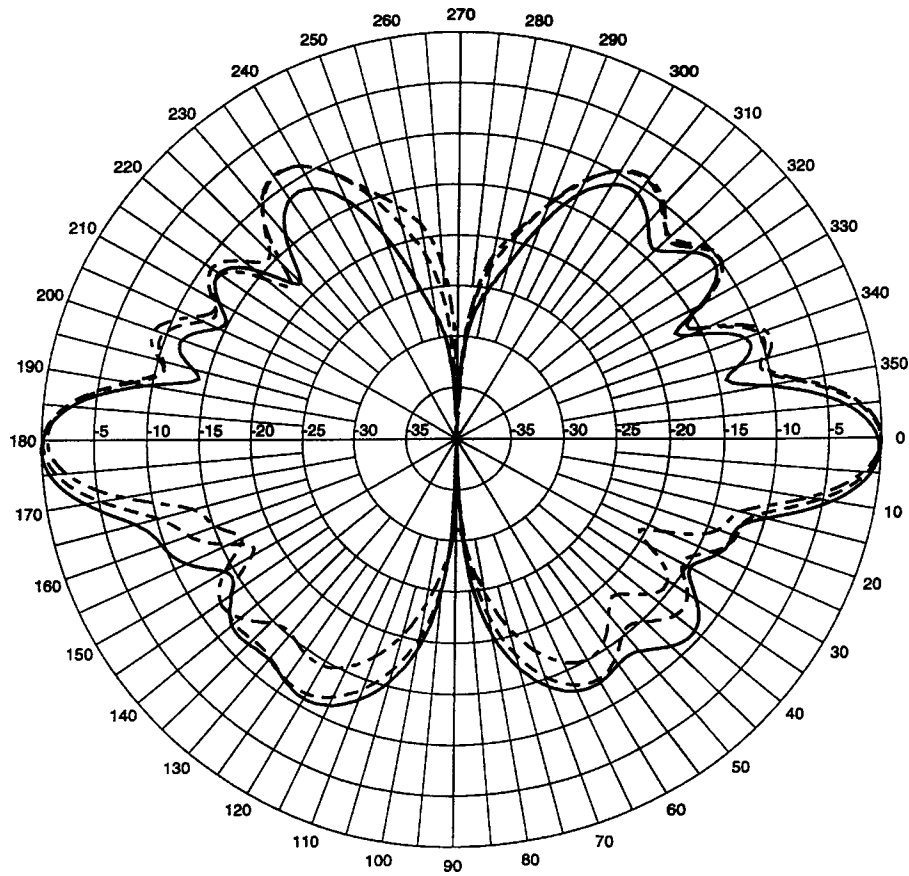


MFB24006 Elevation Cut



MAXRAD, Inc.
4350 Chandler Drive
Hanover Park, IL 60103-6763

Orders: (800) 323-9122
Phone: (630) 372-6800
Fax: (630) 372-8077

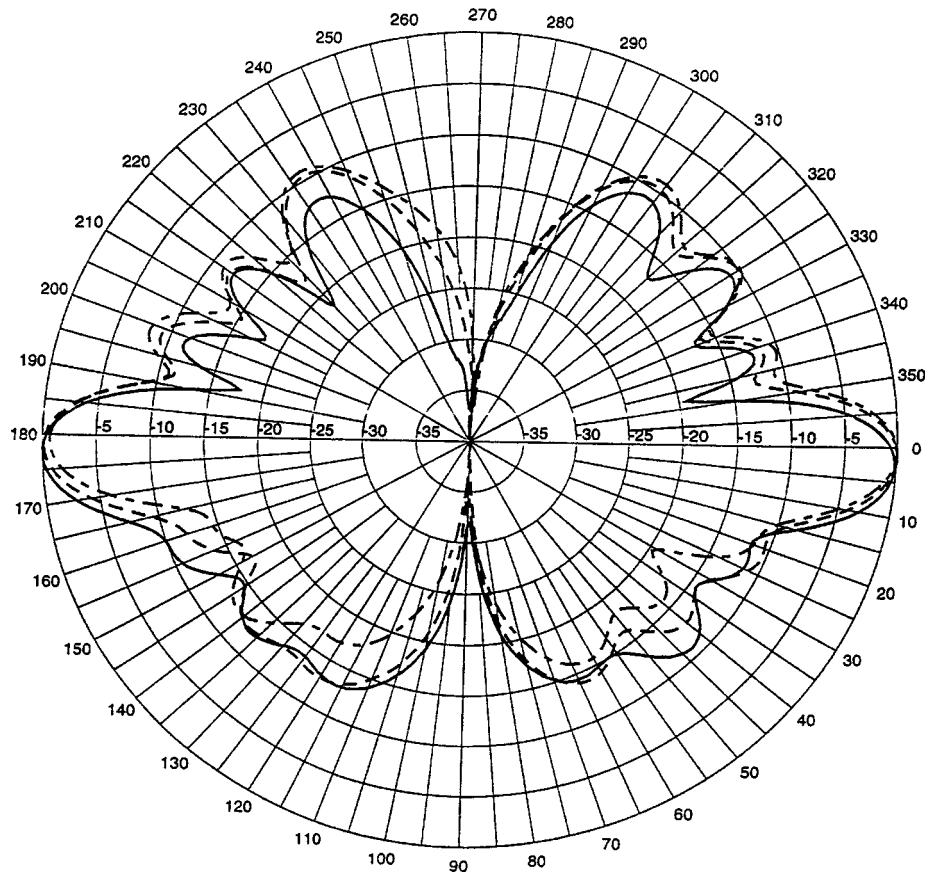


MFB24008 Elevation Cut

MAXRAD[®]
STATE OF THE ART ANTENNAS

MAXRAD, Inc.
4350 Chandler Drive
Hanover Park, IL 60103-6763

Orders: (800) 323-9122
Phone: (630) 372-6800
Fax: (630) 372-8077

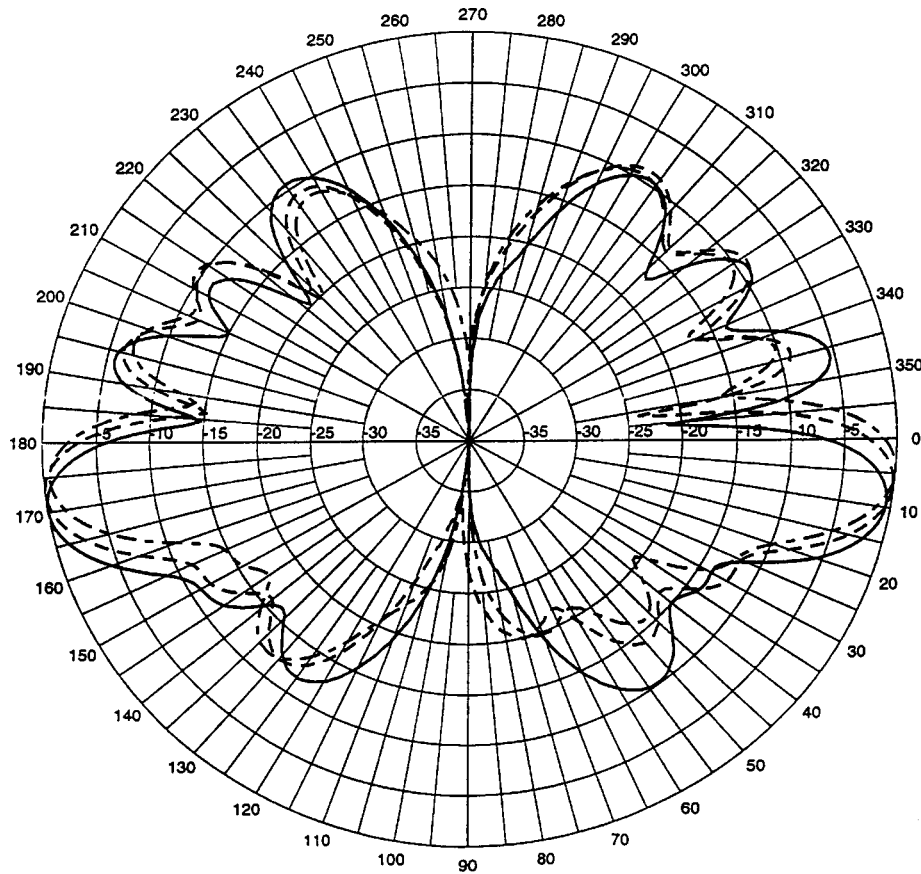


MFB24008-DT2 Elevation Cut

MAXRAD[®]
STATE OF THE ART ANTENNAS

MAXRAD, Inc.
4350 Chandler Drive
Hanover Park, IL 60103-6763

Orders: (800) 323-9122
Phone: (630) 372-6800
Fax: (630) 372-8077

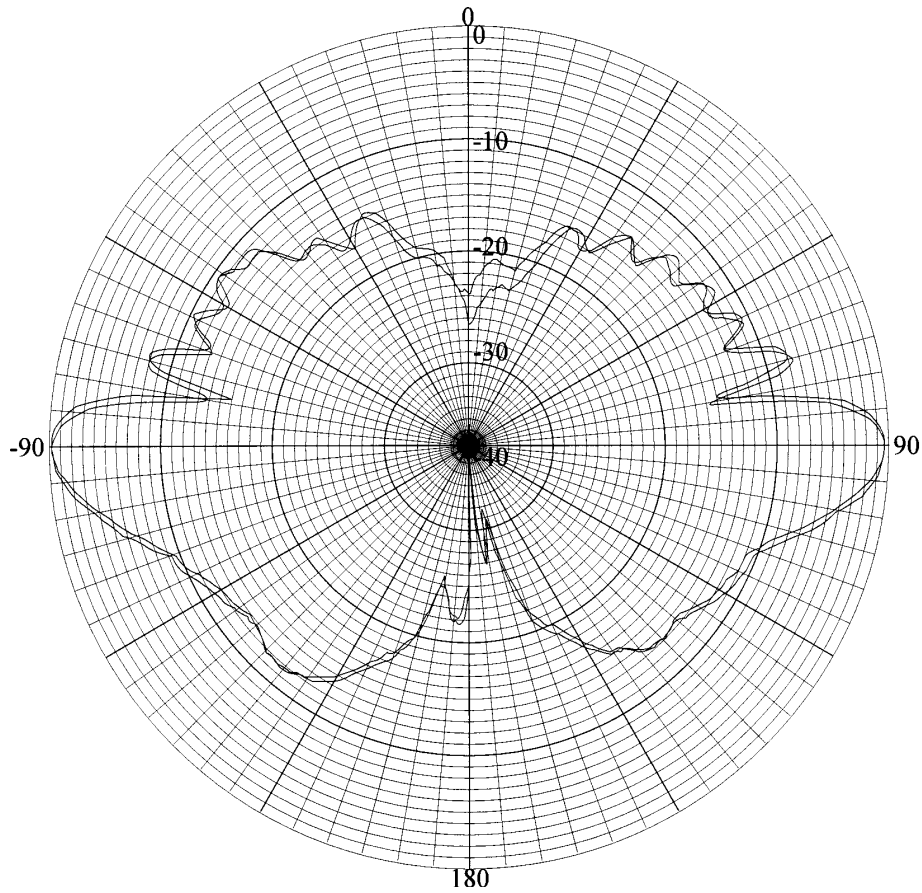


MFB24008-DT7 Elevation Cut



MAXRAD, Inc.
4350 Chandler Drive
Hanover Park, IL 60103-6763

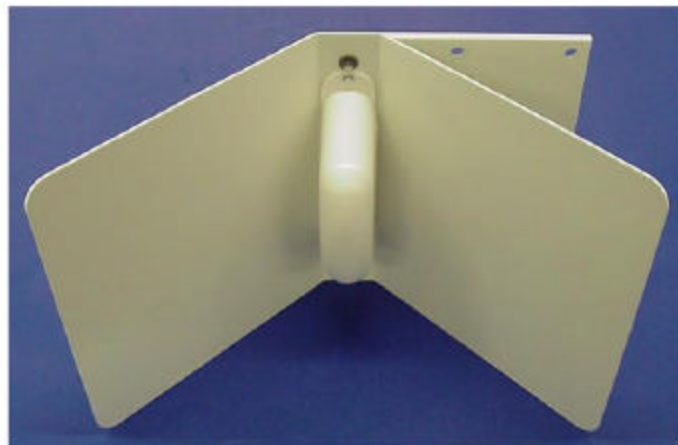
Orders: (800) 323-9122
Phone: (630) 372-6800
Fax: (630) 372-8077

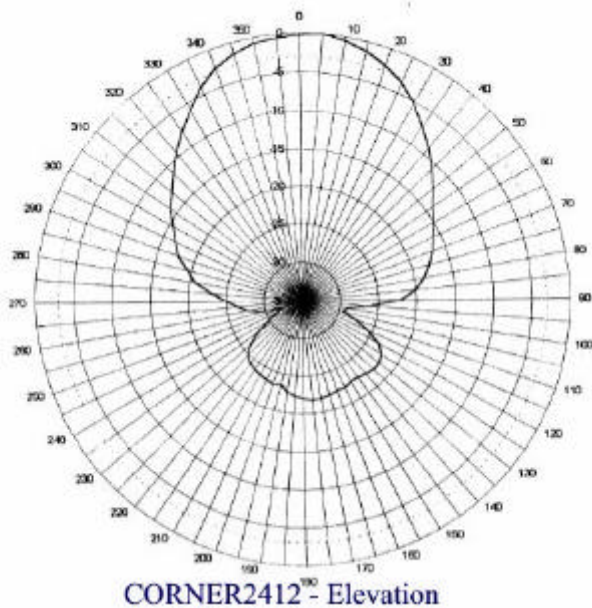
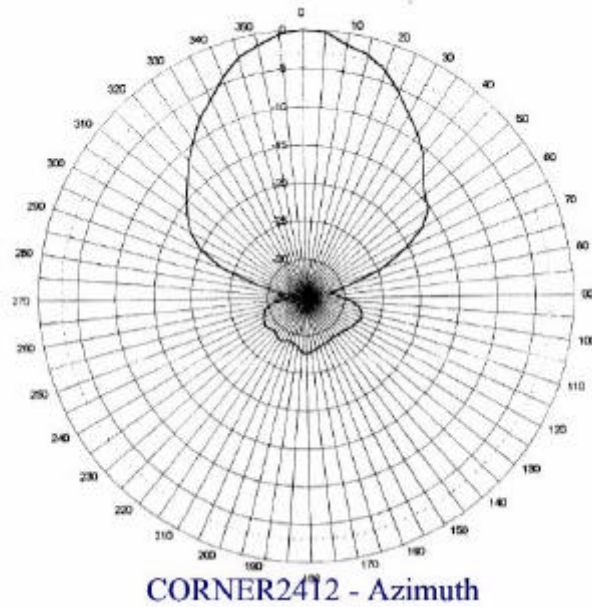


MFB24010 Elevation Cut

**Corner Reflector Antenna Part Number: CORNER-2414
Specifications (Electrical and Mechanical)**

SPECIFICATIONS	CORNER2414
Frequency	2.4 GHz
Gain	14 dBi
Bandwidth @ 2:1 SWR	>200 MHz
Nominal Impedance	50 Ohms
Maximum Power	100 Watts
Vertical Beam Width	44 Degrees
Horizontal Beam Width	35 Degrees
Front-To-Back Ratio	>22 dB
Aperture	7" (17.8 Cm) X 10.5" (26.7 Cm) Front Face
Panel Size	7" (17.8 Cm) X 7" (17.8 Cm)
Wind Velocity (Maximum)	100+ Mph (160+ Kph)
Lightning Protection	DC Grounded; External Recommended
Material (Radome)	ABS Plastic
Material	Aluminum (Irridited)
Weight	<2.0 Lbs. (.9 Kg)
Mounting	Pole, Surface & Corner Mount
Interface Connector	"N" Female (Rear of Antenna)
Mounting Hardware Kit	Included
Mounting Dimensions	Cylindrical Mast <2" (<5 Cm); Outside Dimensions





Radiation Patterns – CORNER2414

(Note: Above patterns incorrectly labeled – should be CORNER2414; not corner2412)

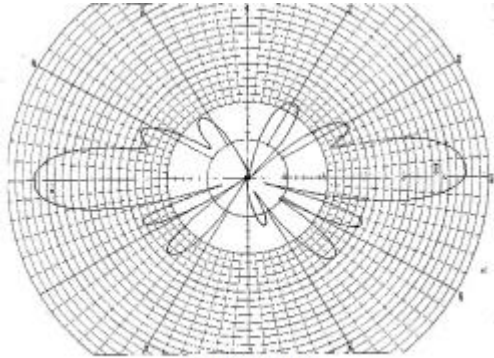


Omni Directional Gain Antennas (Exterior) Specifications

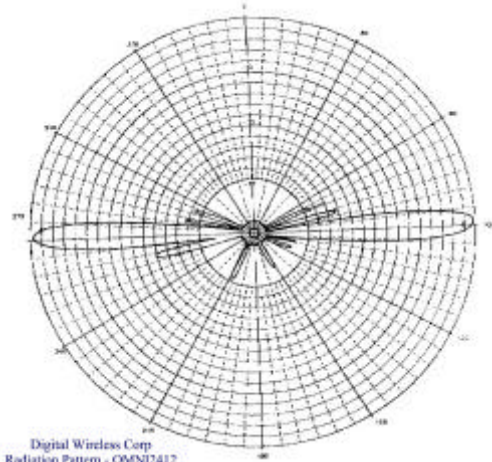
SPECIFICATIONS	OMNI249	OMNI2412
Frequency	2.4 GHz	2.4 GHz
Gain	9 dBi	12 dBi
Bandwidth @ 2:1 SWR	140 MHz	85 MHz
Nominal Impedance	50 Ohms	50 Ohms
Max. Continuous Power	100 Watts	100 Watts
Vertical Beam Width	14 Degrees	7 Degrees
Wind Loading (Flat Plate Equivalent)	30 Sq. In. (193.5 Sq.Cm)	40 Sq. In. (258 Sq. Cm)
Rated Wind Velocity	100+ Mph (160+ Kph)	100+ Mph (160+ Kph)
Lightning Protection	External Suggested	External Suggested
Material (Radome)	Polycarbonate	Polycarbonate
Material (Feed)	Aluminum	Aluminum
Length	27 In. (68.5 Cm)	41 In. (104 Cm)
Weight	2.0 Lbs. (.9 Kg)	2.5 Lbs. (1.1 Kg)
Antenna Diameter	1 In/2.5 Cm	1 In/2.5 Cm
Interface Connector	“N” Female	“N” Female
Mounting Kit	Included	Included
Mounting Dimensions	Cylindrical Mast <2” (<5 Cm)	Cylindrical Mast <2” (< 5 Cm)



CIRRONET.



Digital Wireless Corp
Radiation Pattern - OMNI249



Digital Wireless Corp
Radiation Pattern - OMNI2412

Radiation Pattern's



OMNI249



OMNI2412

CORNER249 SPECIFICATIONS

- *Frequency: 2.300—2.600 GHz*
- *Bandwidth @ 2:1 VSWR: <200 Mhz*
- *Impedance: 50 Ohms, nominal*
- *Maximum power: 100 Watts*
- *Vertical beam width: 75°*
- *Horizontal beam width: 65°*
- *Front-to-back ratio: <22dB*
- *Lightning: DC grounded; external protection recommended*
- *Aperture: 3" x 5.5" (front face)*
- *Aperture panel size: 3" x 3"*
- *Material: Powder coated aluminum*
- *Radome: ABS plastic*
- *Weight: 1 Lb.*
- *Max. Wind Velocity: 100+ mph*
- *Connector: Female "N"*
- *Mounting: Round mast; surface and corner*
- *Mounting Dimension: Up to 2" OD mast*
- *Mounting hardware: Included*
- *Mounting hardware material: Stainless steel*

Features...

- **Small aperture**
- **Minimal wind resistance**
- **Universal mounting**
- **Split balun design provides:**
 - **High efficiency**
 - **Pattern NOT skewed**
- **Rear connector feed point**
- **Half wavelength element**
- **High gain for small size**



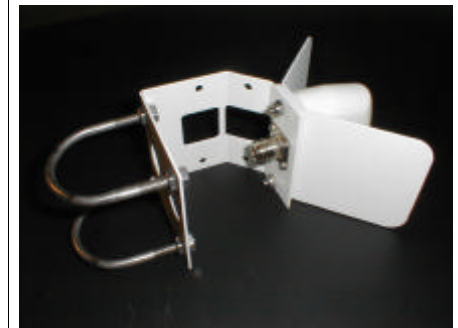
Cirronet, Incorporated

5375 Oakbrook Parkway
Norcross, GA 30093

Phone: +678.684.2000
Fax: +678.684.2001
Email: indust@cirronet.com



CORNER249 9dBi Gain

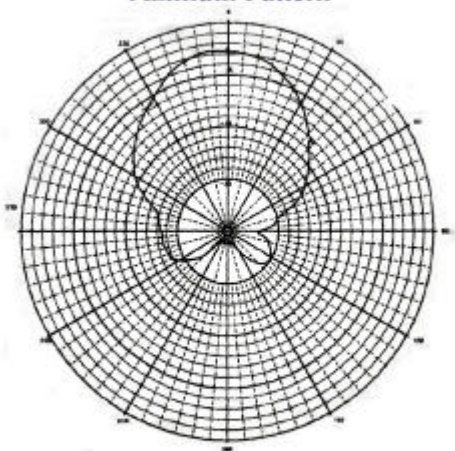


Cirronet, Incorporated

Tel: +678.684.2000

Cirronet™ Part No. CORNER249
Radiation Pattern
(Azimuth)

Cirronet, Inc.
CORNER249
Azimuth Pattern

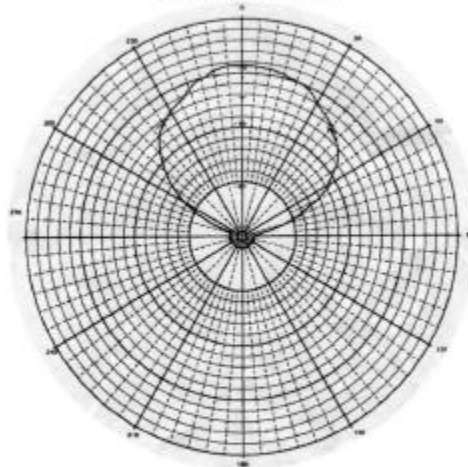


Attenuation: -20dB
Power Output: +10dBm
Frequency: 2.450 GHz



Cirronet™ Part No. CORNER249
Radiation Pattern
(Elevation)

Cirronet, Inc.
CORNER249
Elevation Pattern



Attenuation: -20dB
Power Output: -10dBm
Frequency: 2.450 GHz
Polarization: Vertical



Cirronet has a multitude of Wireless Data Transceivers & accessories available...

- ◆ WIT2410M “Pins Down” OEM Module for direct interface to your new design board
- ◆ WIT2410S “Pins Up” OEM Module for IDC Cable interface to your existing board
- ◆ HN-210—Remote Weatherproof Data Transceiver with built in 6 dBi antenna
- ◆ HN-510—Desk Top Indoor Data Transceiver with DB-9 RS-232 connector
- ◆ HN-1010—Outdoor weatherproof (NEMA) data transceiver
- ◆ HN-1510—Indoor ruggedized data transceiver with user selectable RS-232 & RS-485 interfaces
- ◆ HN-2010—Outdoor weatherproof (NEMA) repeater with internal standby power
- ◆ HN-3010—Outdoor weatherproof (NEMA) composite housing data transceiver with built in 6 dBi antenna and user selectable RS-232 & RS-485 interface
- ◆ Antennas for outdoor long range applications
- ◆ Antennas for outdoor medium range applications
- ◆ Antennas for indoor applications

Contact Cirronet for other useful accessories

	Cirronet, Incorporated
<p>5375 Oakbrook Parkway Norcross, GA 30093</p> <p>Phone: +678.684.2000 Fax: +678.684.2001 Email: indust@cirronet.com www.cirronet.com</p>	